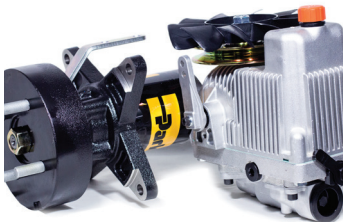




## HUSQVARNA Z460

Husqvarna Z460 is a powerful, professional grade zero-turn mower designed for small to mid-size fleets of professional landscapers and groundkeepers. It provides durable performance with fast and efficient mowing at a low total cost of ownership. Equipped with an integrated transmission with noise reduction, LED digital fuel gauge, rubber discharge chute, folding ROPs, integrated parking brake and an effective commercial 10 gauge cutting deck. Mulch and collector options available as accessories.



### Parker HTE transmission

Parker HTE series drive system offers smooth quiet operation and reduced heat buildup for extended durability and increased fuel efficiency.



### Commercial engine

The commercial engine delivers the power and performance needed for full-time lawn maintenance.

### Professional decks

The professional cutting deck is built for rugged operation and a high degree of mowing precision.



### Perfect weight balance

The optimized weight balance holds hills and maintains traction, boosting the operator's confidence and speed.



## FEATURES

- The professional cutting deck is built for rugged operation and a high degree of mowing precision.
- The commercial engine delivers the power and performance needed for full-time lawn maintenance.
- Delivers more power and smoother performance while boosting fuel efficiency.
- The optimized weight balance holds hills and maintains traction, boosting the operator's confidence and speed.
- Precision adjustment of the cutting deck's height is made simple by foot-activated controls.
- Comfortable, user-focused controls put everything needed to operate the mower within easy reach.
- The discharge chute is built of heavy-duty rubber to withstand wear and tear while protecting nearby property.
- 22 litre fuel tank boasts enough capacity for extended mowing operations in a professional setting.
- The removeable steel floor pan gives easy access to the belts, streamlining cleaning and maintenance.
- The easily foldable roll over protection system (ROPS) can be lowered in tight areas without the proper clearance.
- Automatic parking brake
- Robust blade spindles for optimized durability

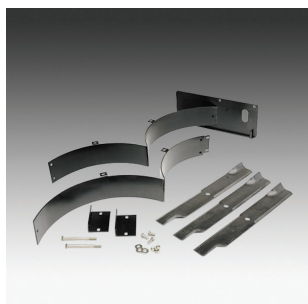
### Technical Specifications

<b>BATTERY</b>	
Battery capacity	10 Ah
Battery type	Lead-Acid
Battery voltage	12 V
<b>CAPACITY</b>	
Power output	23 hp
<b>DIMENSIONS</b>	
Base machine. height	125 cm
Base machine. length	194 cm
Base machine. width (chute down)	188 cm
Base machine. width (chute up)	162 cm
Base machine. width	125 cm
Cutting height steps	13
Seat back height	High
Weight	373 kg
<b>ENGINE</b>	
Cylinder displacement	726 cm <sup>3</sup>
Cylinders	2
Engine name	FS Series V-Twin
Motor/engine manufacturer	Kawasaki
Fuel tank volume	22 l
Fuel tank volume	6 gal (US)
<b>EQUIPMENT</b>	
Air filter type	Dual element
Anti-scalp wheels	4
Blade engagement	Electric clutch
Blade type	High Performance
Blades	3 pcs
Collector	Available as accessory
Cup holder	Yes
Cutting deck type	10-gauge fabricated
Cutting methods	Collect/Mulch/Side discharge
Deck Wash Port	No
Drive method	Lever-operated
Drive system	Rear wheel drive
Drive wheels	Rear
Electric start	Yes
Headlights	No
Hinged armrests	Standard
Hour meter type	Yes
Nose roller	No
Seat type	Professional
<b>LUBRICANTS</b>	
Engine lubrication type	Full pressure with oil filter
Fuel consumption	5.5 l
Fuel tank location	Side (Single)
Oil capacity	2.1 l
Oil filter	Yes
Power/fuel type	Gasoline
<b>MATERIALS</b>	
Cutting deck material	Steel
Master pack: Paper + Cardboard	0 g
Metal total	0 g
Paper + Cardboard total	0 g
PE total	880 g
PET total	0 g
Plastic foil	525 g
Plastic rigid	355 g

### Technical Specifications

Plastic total	880 g
Powder-coated cutting deck	Yes
PS/EPS/HIPS total	0 g
Seat material	Vinyl
Spindle/mandrel type	Aluminium, commercial
<b>PACKAGING</b>	
Quantity in Master pack	1

## ACCESSORIES



HUSQVARNA DRIVE KIT  
598 39 03-01

MULCH KIT  
598 39 06-01

OPERATOR CONTROLLED  
DISCHARGE CHUTE (OCDC)  
966 48 87-01



HUSQVARNA COLLECTION  
SYSTEM  
598 39 02-01